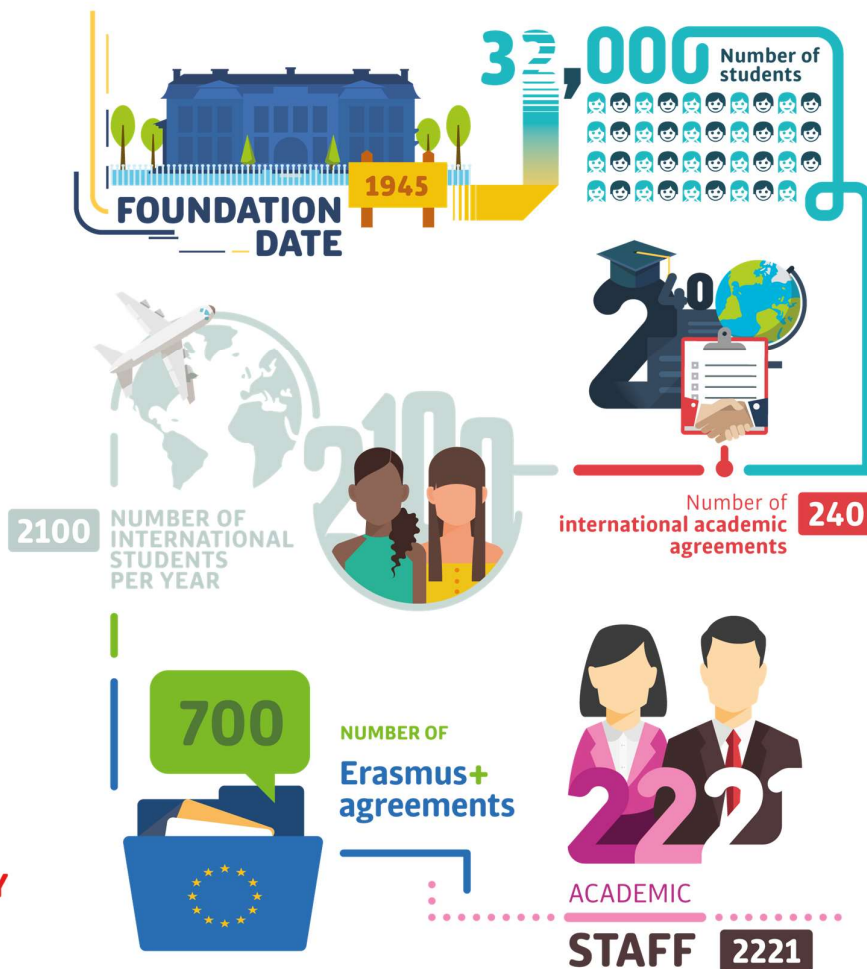




Your partner university!

## Facts and figures





# Introduction

## United in Diversity!

The University of Lodz is responsible higher education institution, focusing its actions on intercultural and social integration.

There are 95 nationalities currently studying at the University of Lodz <https://en.uni.lodz.pl/>. Our University builds academic community around the values of respect for cultural, religious and community identities as well as social sensitivity. UL strives to educate active global citizens who think critically, understand the complexity and the diversity of perspectives which underline most global problems.

Each year there are over 2500 international students studying full time or within exchange programs at the University of Lodz! We hear a lot of languages in the halls of the University.

International relations of the University are visible in various areas. Currently, within direct cooperation agreements, the school cooperates with about 250 partner institutions from all over the world.

You can easily join us by contacting your International Office and asking about the possibilities of teaching staff exchange. The exchange can be within Erasmus+ Credit Mobility Programme for 5 days + 2 days for travel!

### Faculties:

- ❖ Faculty of Biology and Environmental Protection
- ❖ Faculty of Chemistry
- ❖ Faculty of Economics and Sociology
- ❖ Faculty of Philology
- ❖ Faculty of Philosophy and History
- ❖ Faculty of Physics and Applied Informatics
- ❖ Faculty of Mathematics and Computer Science
- ❖ Faculty of Geographical Sciences
- ❖ Faculty of Educational Sciences
- ❖ Faculty of Law and Administration
- ❖ Faculty of International and Political Studies
- ❖ Faculty of Management



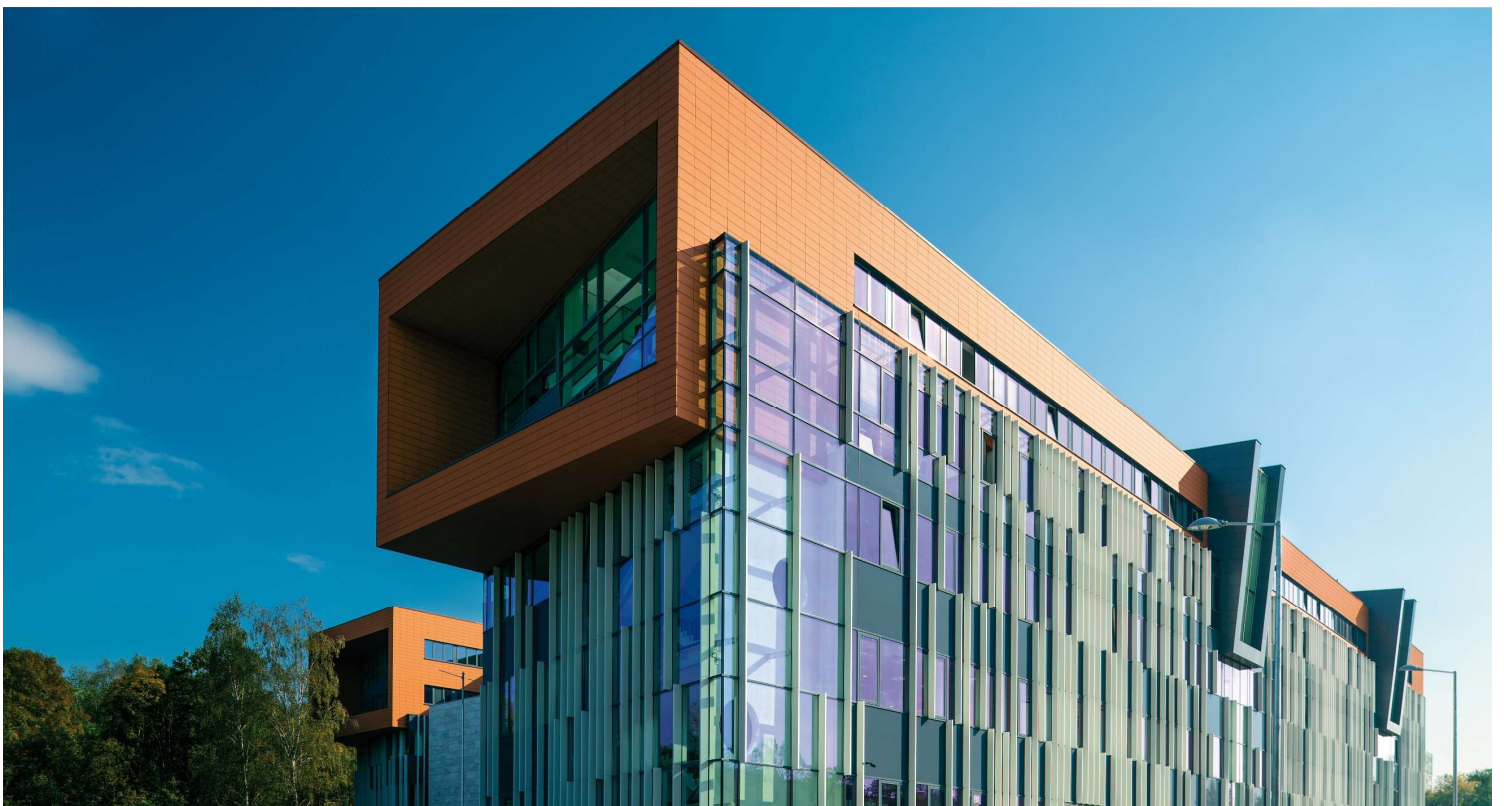
**UNIVERSITY  
OF LODZ**

Poland



## Academic fields

- ❖ **Field of the humanities**
  - archeology
  - philosophy
  - history
  - linguistics
  - literature
  - science about culture and religion
  - art sciences
- ❖ **Field of art**
  - film and theater arts
- ❖ **Field of engineering and technical sciences**
  - architecture and urban planning
  - technical IT and telecommunications
- ❖ **Field of agricultural sciences**
  - forestry sciences
- ❖ **Field of social sciences**
  - economics and finance
  - social economic geography
  - security studies
  - learning about social communication and media
  - politics and administration
  - management and quality science
  - law
  - sociological sciences education
  - psychology
- ❖ **Field of natural sciences and mathematics**
  - Informatics
  - mathematics
  - biology
  - chemistry
  - physics
  - earth and environmental sciences





The University of Lodz offers scholarships within Erasmus+ Credit Mobility Programme for incoming teachers. The grant of 980 euro covers 5 days of stay plus 2 days for travel (140 euro per day). The duration of mobility cannot be shorter than 5 working days.

Additionally, the scholarship covers the cost of travel (reimbursement of the cost up to the amount specified in the table below):

TRAVEL DISTANCES	AMOUNT
Between <b>10</b> and <b>99 KM</b> :	<b>20 EUR</b> per Grantee
Between <b>100</b> and <b>499 KM</b> :	<b>180 EUR</b> per Grantee
Between <b>500</b> and <b>1999 KM</b> :	<b>275 EUR</b> per Grantee
Between <b>2000</b> and <b>2999 KM</b> :	<b>360 EUR</b> per Grantee
Between <b>3000</b> and <b>3999 KM</b> :	<b>530 EUR</b> per Grantee
Between <b>4000</b> and <b>7999 KM</b> :	<b>820 EUR</b> per Grantee
<b>8000 KM</b> or more:	<b>1500 EUR</b> per Grantee



The shortest route according to the distance calculator available at the following website: <https://erasmus-plus.ec.europa.eu/resources-and-tools/distance-calculator>

To make the exchange work for you, please contact an International Office at your university that manages the teachers' exchange.



**UNIVERSITY  
OF LODZ**  
Poland

# Details of the required documents:



First submit the following documents to the International Office at your institution (all documents need to be **in English**):

1. **Application form\*** (in doc. form – Word)  
Visit your International Office to get the Application.  
**Staff Mobility for Teaching Agreement**  
Visit your International Office to get the Application.
2. **Staff Mobility for Teaching Agreement\***
3. **Curriculum vitae**
4. **Language certificate** – the applicants that do not have any official language certificate such as TOEFL or IELTS can present other certificates, for instance: university certificate, language school diploma or documents confirming teaching in English.
5. **Nomination Letter** from Sending University, which also confirms employment at the Home University.
6. **Other documents** confirming the qualifications and teaching achievements of the Applicant (if available).



**UNIVERSITY  
OF LODZ**

Poland

# The city of Łódź



Łódź is a large city in the center of Poland. Its population is around 700 000 (city itself) – 1 400 000 (metropolitan area). It is the 3rd largest city in Poland. It is located near the crossroads of Poland's two main highways. It has an international airport, and several train stations.



The Łódź region is situated on central lowlands with a minor hill range. The cities are now important for logistics and commerce, as well as electronic and mechanical industry. Outside urban areas, there are huge areas of extensive agriculture. Łódź's location is really convenient in relation to the Polish capital, Warsaw.

It is only 120 km away, and there are both highway and train connection. It is very easy to go and visit other countries in the European Union: it takes 4 hours by train or bus to Berlin (Germany) from Łódź, and Prague (Czech Republic) is about 5-6 hours away.

Compared to the capital, Łódź is more relaxed and has lower costs of living. It has a larger proportion of antique buildings, but also a more integrated entertainment cluster.

Łódź is proud of a collection of historic buildings in Piotrkowska street (that show a multitude of styles – guiding you to the 19th and early 20th history of European architectural design). The city is also noted for remnants of its textile industry past – you can see antique redbrick industrial buildings successfully turned into entertainment and commercial areas. The town abounds in splendid, large, and freely accessible parks (gardens) – which makes the people stay connected to nature.



**UNIVERSITY  
OF ŁÓDŹ**

Poland